

CERTIFICATE OF LOCATION OF GOVERNMENT CORNER

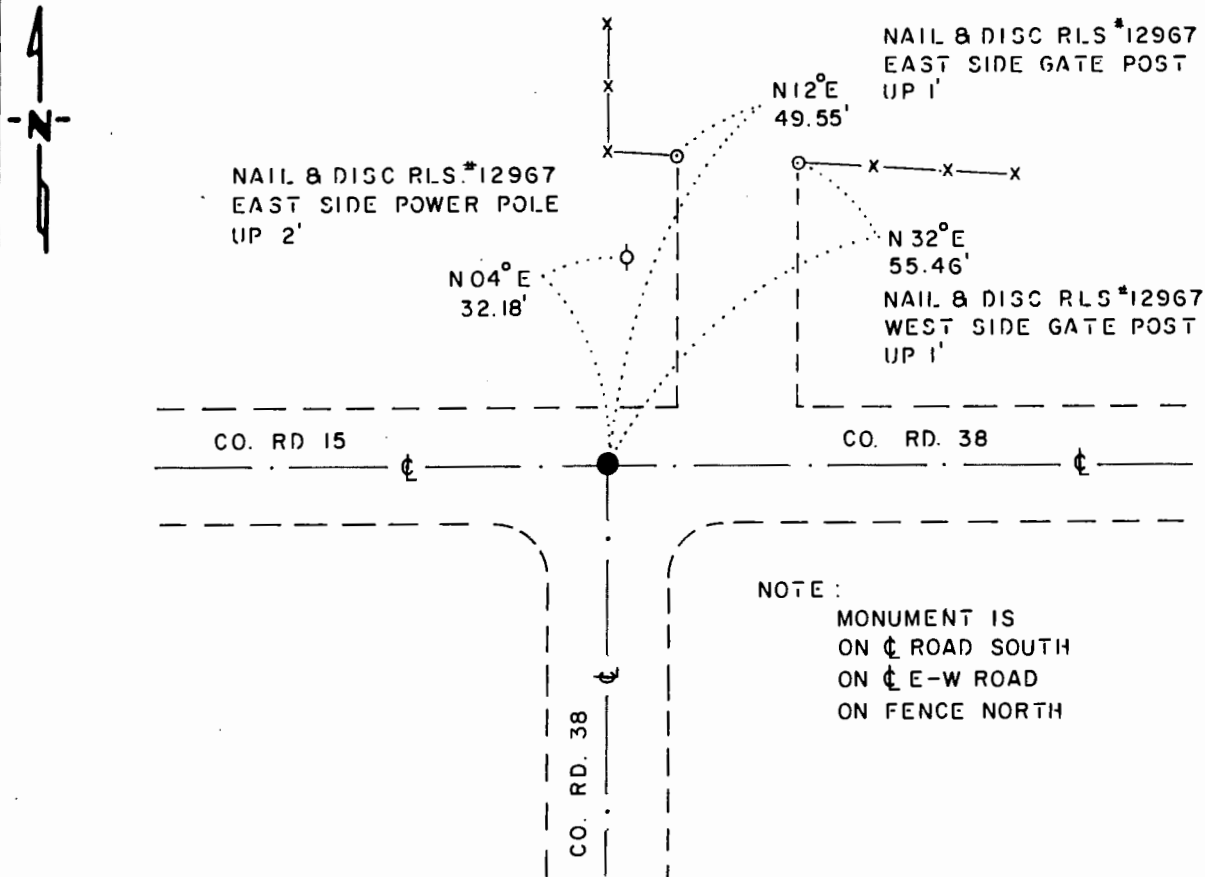
NORTHEAST Corner of Section 33, Township 108 N., Range 40 W., 5th P.M.

STATE OF MINNESOTA, County of MURRAY

At the corner location shown on the sketch:

- On _____ found a _____
DATE
- left monument as found, lowered monument, removed monument (explain)
- On 6-27-85 placed a 1"x6" RAILROAD BOLT, DOWN 0.1'
DATE

SKETCH OF REFERENCE TIES



BEARINGS OBSERVED WITH COMPASS

Statement of evidence relative to this corner location is on back of page.

J. B. M. 7-18-85
G-361

I hereby certify that this document and the data contained herein was prepared by me or under my direct supervision.

Lowell R. Pommeroy 7-22-85
SIGNATURE DATE

Registration No. 17005
 Land Surveyor, Professional Engineer
 County Surveyor, County Engineer

OFFICE OF THE COUNTY RECORDER **172138**
County of Murray

I hereby certify that this document was filed in the Co. Recorders office at 10 .M. on the 30th day of July A.D., 19 85

County Recorder Henry J. Stone
By _____, Deputy
DOCUMENT NO. 172138

Northeast Corner Section 33, Township 108 North, Range 40 West

This corner was originally established by the U. S. General Land Office survey in 1861. The government notes show corner marked with a wood post set in mound of earth with pits and trench dug around the mound.

In October 1984, the DNR Bureau of Engineering contacted the Murray County Offices of the Recorder and Highway Engineer for corner information.

The following information was obtained from the County Highway Engineer's Office:

Government corner tie book, (old) date not indicated, shows the corner to be a stone with these ties:

tack in fence corner, north on line, 32.8 feet
RP tack in light pole, northwest, 36.8 feet

In October 1984, the DNR Bureau of Engineering traversed to the area of the corner and set a temporary point, a concrete nail, at the intersection of paved roads east-west and south and a fence line north. Checked the area for metal attraction and evidence of old ties but found nothing. The temporary point was found to be:

2631.24 feet from the north quarter corner of Section 33
5299.80 feet from the northeast corner of Section 34

Returned to the corner area on June 27, 1985, and dug a 12 inch diameter hole to a depth of 24 inches and probed down and around hole to a depth of 36 inches but found nothing. Center of hole was at above mentioned temporary point. Found new reference ties with RLS#12967 on them.

On July 17, 1985, talked with Gary Martin, RLS#12967, about the corner. Based on his conversation with the county engineer, who stated that road construction probably removed the stone, he accepts the concrete nail, at the intersection of roads and fence line as the location of the corner.

On June 27, 1985, the DNR Bureau of Engineering replaced the concrete nail with a 1 inch by 6 inch railroad bolt.

Traverse information is available from the DNR Bureau of Engineering.

rec17/missu2